

The Berwick Eye



BERWICK EYE AND SURGICENTRE

May 08

New Facilities at Berwick Eye Centre

Aspheric Restor Intraocular lens

Our Subspecialties

- Dr Kavita Khurana**
Corneal diseases and general ophthalmology
- Dr Charles Su**
Eyelid, Orbit and Lacrimal
- Dr Elaine Wong**
Paediatric and Strabismus
- Dr Cecilia Ling**
Inflammatory Eye Disease
- Dr Padmini Gnanaharan**
Adult and Child Ophthalmology
- Dr Daniel Chiu**
Retinal and vitreous
- Dr Ed Hauptman**
Cataract surgery, Presbyopia Correction, Glaucoma, Ocular Pathology

All our doctors are happy to treat general conditions



Provides a Full Range of Vision
Decreases Dependency on Glasses

Alcon has released a new aspheric Restor multifocal lens that we have trialed at Berwick Surgicentre. Aspheric technology in intraocular lenses means better clarity especially in low-light conditions. Preliminary results show a high degree of patient satisfaction and subjective impression of vision quality is better than that elicited with the previous model. Dr Hauptman is one of the Victoria's most experienced surgeons in the use of this multifocal technology. Critical predictors for



success include careful patient selection. This includes minimal astigmatism, disease-free retina, bilateral implantation and high patient motivation to be glasses-free whilst accepting of the (usually minimal) entopic phenomena associated with these lenses. The additional cost for insured patients (but not veteran affairs patients) is approximately \$500 per eye as mandated by health fund legislation since October 2006 for selected premium implants. Berwick Surgicentre is unique as it continues to guarantee no-gaps treatment for multifocal and well as standard cataract surgery for all health funds.

For patients with cataracts and astigmatism we implant the AcrySof Toric lens, which corrects for both conditions simultaneously. For other patients with cataracts we use the AcrySof® IQ lens, which provides to also correct spherical aberration to improve night vision

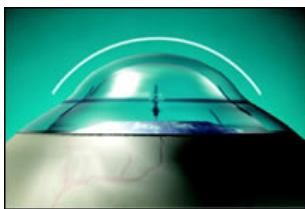
Upgraded IOLMaster.

- We have upgraded to a version 5 Zeiss IOLMaster and this affords our patient the optimum in surgical accuracy to reduce or eliminate the need for spectacles postoperative and enhance patient satisfaction.



It is the first non-contact optical coherence biometer and it allows fast, accurate measurements of eye length and surface curvature, necessary for cataract surgery.

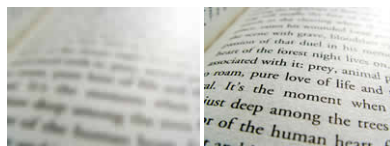
CK: a treatment for presbyopia.



Some patients are intolerant of wearing spectacles for reading. Surgical options include presbyopic multifocal lens

exchange and this works well in some long-sighted patients.

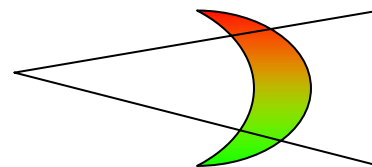
Monovision is when the non dominant eye is made myopic for reading. This can be by laser refractive surgery can be effective but like lens exchange is expensive and invasive.



Before CK

After CK

For younger presbyopes who have been spectacle free until their forties, the ideal option is **CK: conductive keratoplasty**. Using a precise radiofrequency probe the peripheral cornea is steepened in the non-dominant eye. Recovery and effect are usually instant though as presbyopia increases over the decades touch up treatments may be required. *As with any surgery, there are always risks and this must be discussed with your surgeon beforehand.*



BERWICK EYE AND SURGICENTRE

22 Langmore Lane
Berwick 3806

Phone: 97689210
Fax: 97695136
E-mail: ed@berwickeye.com.au
Www.berwickeye.com.au



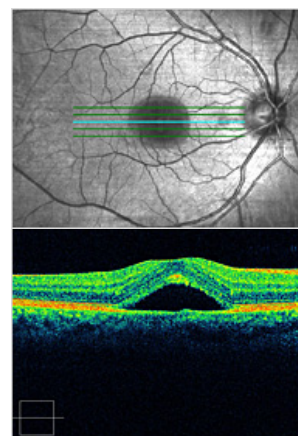
We have integrated our practice management system to be Argus and 2Hippo compliant and we are happy to receive referrals and transmit letters by either modality.



Zeiss Cirrus OCT

Berwick Surgicentre is the third site in Melbourne for this state of the art retinal scanner. This new high-performance OCT instrument from offers a quantum leap forward in imaging. Featuring spectral domain technology, Cirrus HD-OCT delivers exquisite high-definition images of ocular

structures, precise registration and intuitive, efficient operation. It is the standard for imaging macular diseases including macular degeneration and diabetic retinopathy.



Our Facilities include

- Corneal Topography for diagnoses of corneal astigmatism and ectasia
- HRT scanner : optic nerve head analysis
- Humphrey Automated Perimetry
- Corneal Pachymetry for measuring corneal thickness in glaucoma
- Digital Fundus Fluorescein Photography
- Auto refraction
- Full Orthoptic support
- Slit lamp digital photography
- Digital Fundus Fluorescein photography
- Vision simulator for Multifocal and Aspheric IOL
- Accredited (ACHS) Day Surgery
- ConMed Hyphrecator for treating trichiasis

Lucentis and Avastin

These are a new class of drug called VEGF inhibitors that used in preventing blindness from macular degeneration and some other retinal diseases.

At Berwick Surgicentre we have treated hundreds of patients with these sight saving treatments that are now covered by the PBS for specific conditions.

Do You Know?

That the ophthalmologists at Berwick Eye Centre are all members of the Senior Medical Staff of the Royal Victorian Eye and Ear Hospital. This means that they can provide surgery there to uninsured private patients there at subsidised rates where the theatre band fee is waived, **saving over \$700 in the case of cataract surgery.**

That all cataract surgery (including Toric and Multifocal lenses) and most other surgery at the Berwick Surgicentre is performed as NO-GAPS.

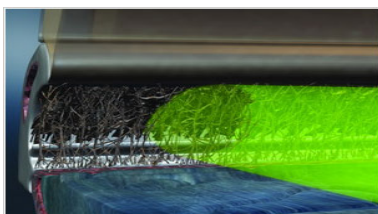
That they day surgery operates on weekends also for easy access of patients and their carers.

That we are accredited with ACHS, the health department, all the health funds and Veteran Affairs.

Selective Laser Trabeculoplasty

is clinically proven to treat glaucoma by safely and effectively reducing intraocular pressure in a single, office procedure. SLT can be an effective adjunct to medication therapy or used as a primary treatment to reduce or eliminate the need for topical glaucoma medications, along with their common systemic side effects.

- Proven to reduce IOP
- No systemic side effects
- A single treatment therapy
- Effective as primary, adjunct or repeat therapy
- Safe, office-based procedure
- Protects trabecular meshwork
- Improves patient compliance
- Medicare reimbursed



SLT works by using laser light to stimulate the body's own healing response to lower your eye pressure. Using a special wavelength and energy, the laser affects only pigmented (melanin containing) cells of your eye unlike ALT which permanently damages and scars the eye. SLT improves the flow of fluid in the eye, which in turn lowers your eye pressure.